



# COMPANY PROFILE

# About Us

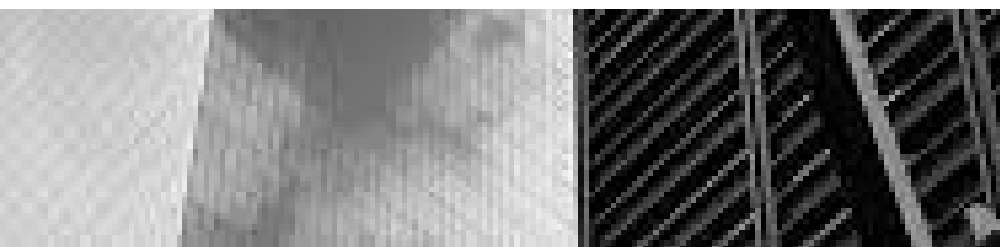
At SkyZenith Asset Management & Advisory, we specialize in delivering premier property management services aimed at enhancing asset value and optimizing operations. Our seasoned professionals provide bespoke advisory solutions, encompassing feasibility studies, financial planning, and regulatory compliance, equipping clients with the insights and tools necessary for informed investment decisions and portfolio expansion



# OUR SERVICES

At SkyZenith Asset Management & Advisory, we offer a wide range of strategic services designed to optimize real estate investments, streamline operations, and enhance asset value. Our expert team delivers tailored solutions across leasing, management, advisory, and development sectors.

- **Retail Leasing**
- **Commercial leasing**
- **Hotel Leasing**
- **Design & Built Solutions**
- **Smart Buildings & Technology Integration**
- **Fitout Management**
- **Asset Management**
- **Mall Management**
- **Experience Services and Club Management**
- **Residential Sales**
- **Commercial Sales**
- **Land Acquisition & Advisory Services**

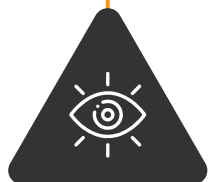


# STRATEGIC SOLUTIONS FOR SUSTAINABLE GROWTH



## OUR MISSION

Our mission at SkyZenith is to help our clients achieve financial success through strategic asset management and advisory services. We are dedicated to fostering sustainable growth and ensuring that our clients' investments contribute to a better future.



## OUR VALUE

Our core values guide every aspect of our business and ensure that we consistently deliver excellence. We uphold the highest standards of honesty and transparency in all our dealings. Our clients' needs and goals are at the forefront of everything we do.



## OUR VISION

We envision a world where financial success and sustainability go hand in hand. By integrating sustainable practices into our core services, we aim to lead the industry in promoting responsible and impactful investing.

# Why Choose SkyZenith ?

Choosing SkyZenith means partnering with a firm that is dedicated to your success. Here's why we are the best choice:

01

## **Innovative Approaches :**

We leverage the latest technologies and innovative strategies to deliver superior results.

02

## **Personalized Solutions:**

We take the time to understand your unique needs and tailor our services accordingly.

03

## **Sustainable Practices :**

We integrate sustainable practices into our core services, ensuring that your investments contribute to a better future.

04

## **Commitment to Excellence :**

We are dedicated to delivering excellence in every aspect of our service.

05

## **Preventive Maintenance**

Maintenance tasks that are done frequently and routinely help detect problems that have not yet escalated.

06

## **Holistic Approach :**

We consider economic, environmental, and social factors to provide comprehensive solutions.



## Retail Leasing

We connect retailers with premium commercial spaces to maximize visibility and revenue.

### Our approach includes:

- ✓ **Market Analysis** - Identifying the best retail locations based on demographics, foot traffic, and competition.
- ✓ **Tenant Mix Strategy** - Curating a balanced mix of retailers to drive shopper engagement.
- ✓ **Lease Negotiation** - Securing favorable lease terms that benefit both landlords and tenants.
- ✓ **Brand Positioning** - Ensuring retail brands are strategically placed for optimal performance.



# Commercial Leasing

Our commercial leasing services cater to businesses seeking office spaces, co-working spaces, and industrial setups

## Our approach includes:

- ✓ **Tailored Space Solutions** – Matching businesses with the right commercial spaces for growth.
- ✓ **Financial Planning** – Offering cost-effective lease options with flexible payment structures.
- ✓ **End-to-End Transaction Support** – Handling documentation, compliance, and legalities seamlessly.

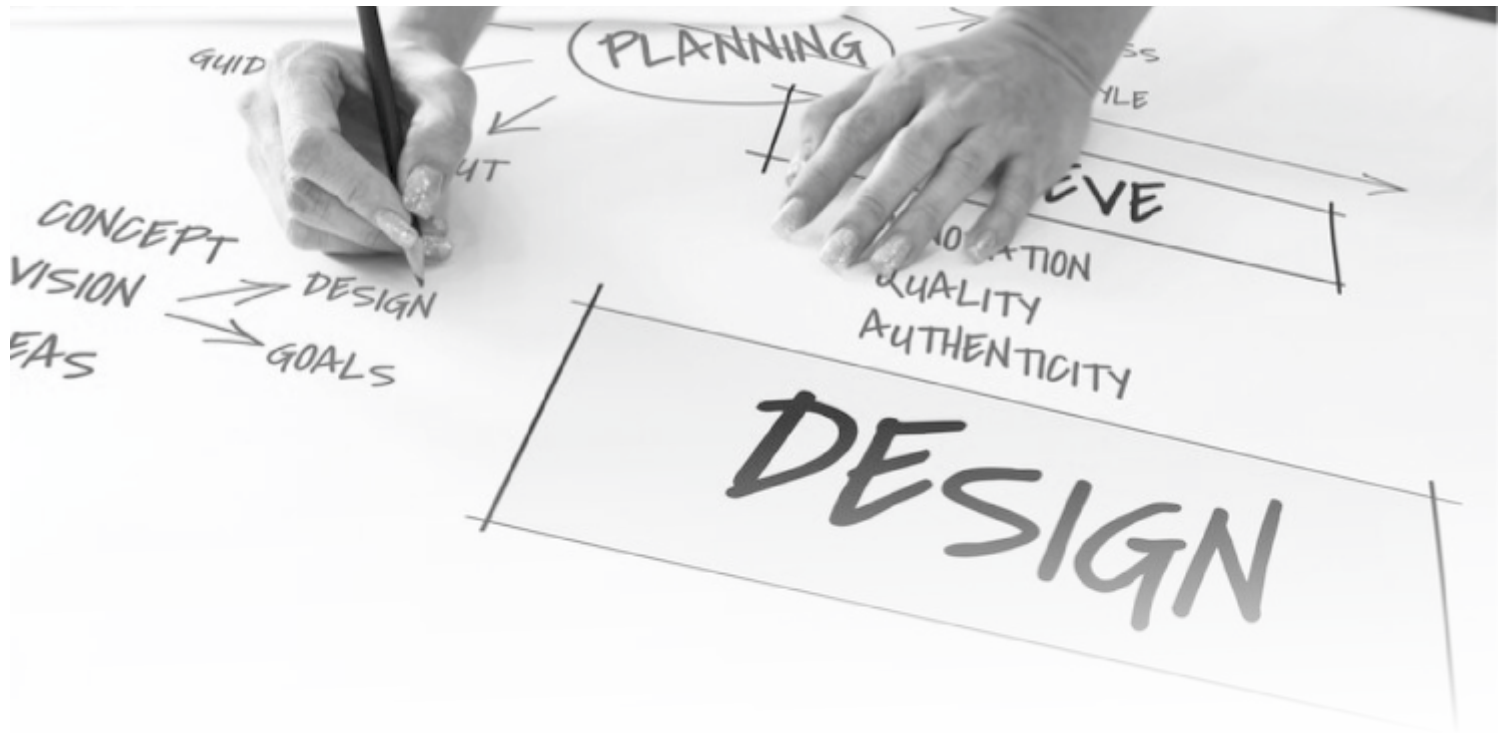


# Hotel Leasing

We assist hotel brands in acquiring prime locations to enhance guest experiences and revenue generation

## Our services include:

- ✓ **Site Selection & Feasibility Studies** - Evaluating potential hotel locations for profitability.
- ✓ **Lease Structuring & Negotiation** - Securing deals that align with business goals.
- ✓ **Brand-Specific Leasing Strategies** - Customizing leasing solutions for boutique hotels, luxury chains, and business accommodations.



## Design Solutions

We are a leading consultancy firm renowned for its expertise in design solutions across architecture, interior design, and workspace planning. Our mission is to inspire and empower organizations to achieve their vision through thoughtful design, strategic planning, and sustainable practices. With a team of talented architects, interior designers, and design strategists, we collaborate closely with clients to create environments that enhance functionality, aesthetics, and user experience.

**SkyZenith offers a comprehensive range of design solutions tailored to meet the diverse needs of our clients :**

- ☑ Architectural Design:
- ☑ Interior Design and Space Planning:
- ☑ Environmental Design and Sustainability:
- ☑ Workplace Design and Corporate Interiors:
- ☑ Retail and Hospitality Design:

# Smart Buildings & Technology Integration

We specialize in transforming properties into smart, technology-driven spaces



## Our solutions include:

- ☒ **Building Automation Systems (BAS) –** Enhancing efficiency with IoT-enabled controls.
- ☒ **Energy Management –** Reducing operational costs with AI-driven energy optimization.
- ☒ **Security & Surveillance –** Implementing advanced security solutions for asset protection.

# Fit-out Management

Most fit-out projects represent a disruption to your regular activity and, without proper management; they may result in unnecessary loss of time and effort from your team.

For your business to continue fluently, maintaining customer focus and competitiveness, we provide you with integrated, end-to-end fit-out services for any kind of real estate project: Office, Retail, Industrial, Residential, or Mixed Use.

Using a solidly based schedule and plan, we accompany you towards enhancing the aspect of your premises and your corporate image, within budgets and deadlines and without losing valuable business time. Our expertise covers all fit-out-related services and ensures fluid and competent management of the overall process, from planning to final delivery: Building Surveys, Office Relocation, Office Fit-Outs, and Refurbishments.

Once your new or improved office is in place, we remain at your side, supporting you in day-to-day occupational logistics with our timely and effective facilities management service.



## **We act as Your Principal Contractor on all stages of your Project:**

- ✓ Providing you with uniquely tailored workplace solutions
- ✓ Negotiating contracts and purchasing agreements in your best interest
- ✓ Covering all technical areas of construction and fitting
- ✓ Reflecting your corporate identity in front of clients, partners, and tenants
- ✓ Improving work conditions and therefore enhancing the employees' motivation
- ✓ Ensuring your project is completed on time and within budget

# Asset Management

We help clients enhance the long-term value of their real estate investments through:



## Our solutions include:



**Financial Performance Optimization** – Implementing cost-saving strategies while maximizing revenue.



**Tenant Retention & Engagement** – Ensuring high occupancy rates through exceptional service.



**Risk Management & Compliance** – Maintaining properties in line with regulatory standards.

# Mall Management

Our mall management services create thriving shopping destinations by enhancing operational efficiency and customer experience.



## We focus on:



**Retail Strategy & Tenant Coordination** – Developing a strong tenant mix for increased footfall.



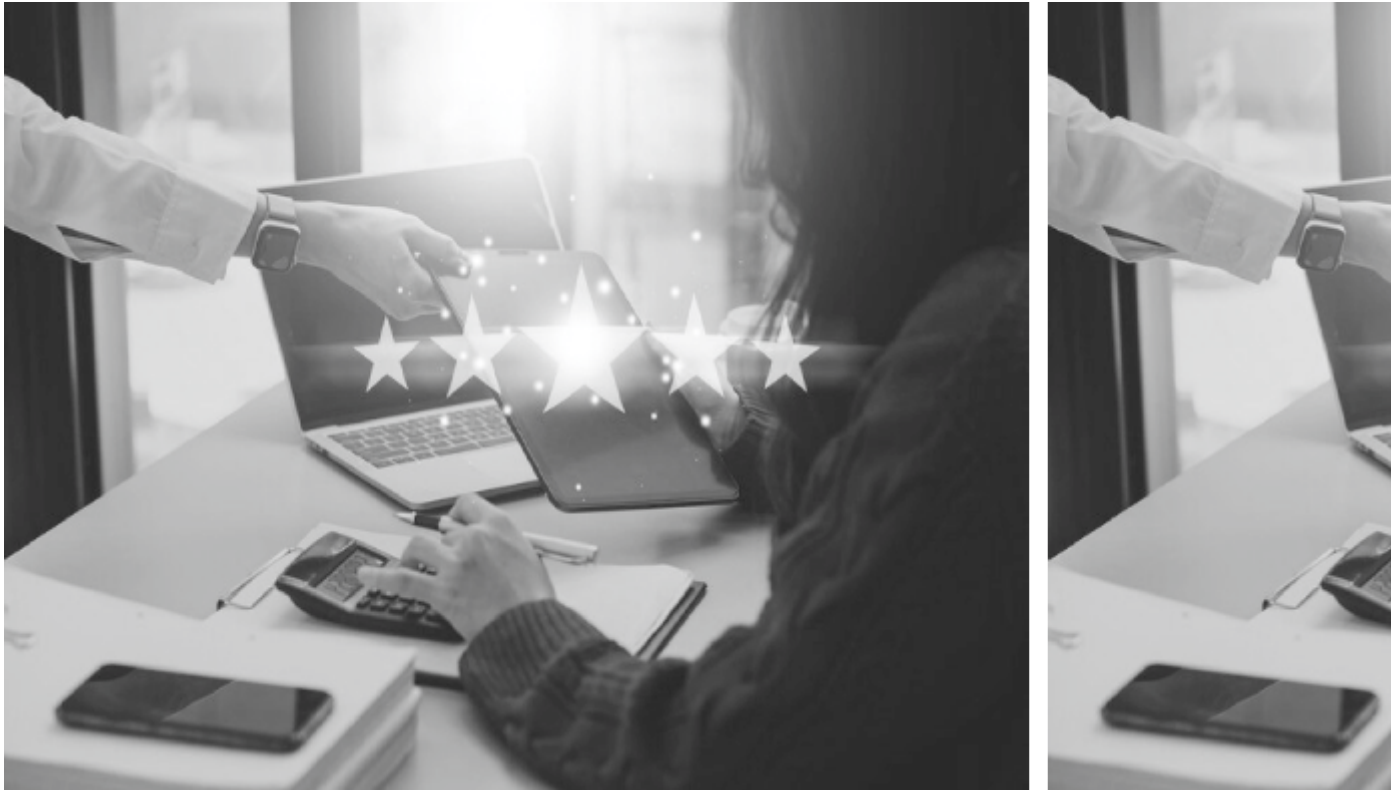
**Facility & Security Management** – Ensuring safety, cleanliness, and seamless operations



**Marketing & Promotions** – Driving customer engagement through strategic campaigns and events.

# Experience Services & Club Management

We design and manage premium lifestyle and recreational spaces, including:



## We focus on:



**Luxury Club Operations** – Managing elite members-only clubs with high-end services



**Customer Engagement Programs** – Enhancing user experiences through personalized services.



**Event Planning & Execution** – Organizing exclusive events for brand positioning.

# Residential Sales

We assist clients in buying and selling premium residential properties by offering:



**Market Research & Valuation** – Determining accurate property values for maximum ROI.



**Legal & Transaction Assistance** – Handling paperwork and compliance seamlessly



**Personalized Property Matchmaking** – Helping buyers find homes that meet their lifestyle needs.

# Commercial Sales

We provide end-to-end solutions for the sale and acquisition of commercial properties, including:

---



**Investment Consulting** – Advising on profitable commercial real estate opportunities.



**Due Diligence & Documentation** – Ensuring transparency in every transaction.



**Negotiation & Deal Structuring** – Maximizing returns on investment for sellers and buyers.



# Land Acquisition and Advisory

We support businesses and investors in acquiring strategic land parcels for development.



## Our services include:



**Investment Consulting** – Advising on profitable commercial real estate opportunities.



**Due Diligence & Documentation** – Ensuring transparency in every transaction.



**Negotiation & Deal Structuring** – Maximizing returns on investment for sellers and buyers.



“

At SkyZenith Asset Management & Advisory,  
we are committed to helping you maximize  
asset value, enhance operational efficiency,  
and drive sustainable growth in the real  
estate sector.

”

**For any inquiries, service requests, or support, here's how you can reach us:**

**Address :** Spaze Platinum, Sohna Road, Gurgaon

**Phone :** +91-97178 81177

**Email :** hemraj.dabur@skyzenith.in

[www.skyzenith.in](http://www.skyzenith.in)